



Nurtured we thrive

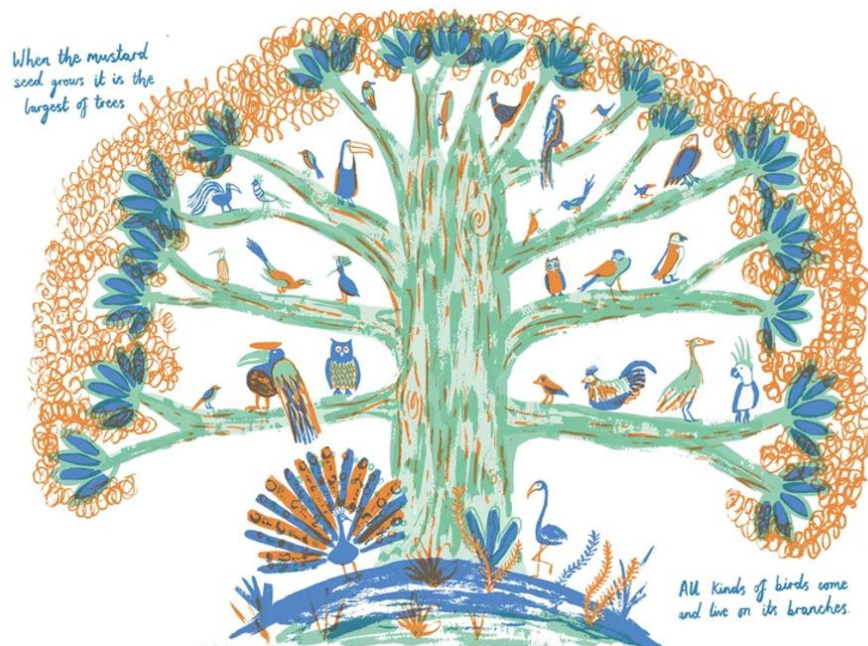
Admissions Policy

Compassion, Responsibility, Justice, Forgiveness

Member of Staff Responsible	Tony Pring
Position	Headteacher
Dated	November 2025
Date of next review	November 2026

Thurnham Church of England Infant School is a caring Christian community where everybody is valued and encouraged to flourish.

Nurtured We Thrive



LITURGICAL REFERENCE

Jesus said, “What shall we say the kingdom of God is like, or what parable shall we use to describe it? It is like a mustard seed, which is the smallest of all seeds on earth. Yet when planted, it grows and becomes the largest of all garden plants, with such big branches that the birds can perch in its shade.”

Matthew, 13: 31-32 New International Version

OUR VISION

At Thurnham Church of England Infant School we draw inspiration from the parable of the mustard seed; a tiny seed that grows into a mighty tree, illustrating the potential within us all to thrive. We believe that by nurturing this power we can create a caring Christian community. By acting with compassion and forgiveness, we empower each of us to set a positive example to others. We value everyone’s voice and their responsibility to use it for positive change and social justice.

OUR VISION EXPLAINED

There is much debate about what kind of seed the parable refers to, but it is believed that the plant was quick-growing and provided shelter for many birds. In the same way, Jesus' mission attracted outsiders and outcasts. Everyone was welcome and had a place within it. For us at Thurnham, this symbolises the inclusivity of our school, a school where all pupils are welcome and the 'right soil and growing conditions' will lead to growth and flourishing for all. Academic excellence reflects the pursuit of one's God-given talents, while character development resonates with teachings about moral virtues and ethical behaviour.

Our school values of compassion, responsibility, justice and forgiveness align with theological principles. Nelson Mandela's quote, "Knowledge is power, but it is the development of character that determines an ability to use it widely," highlights the importance of combining intellectual growth with moral development. This is in harmony with Christian teachings that emphasise the development of moral virtues and ethical behaviour.

Our Christian vision: Nurtured We Thrive and school Christian values underpin our approach to learning and our curriculum:

Compassion - love in action

Responsibility - doing the things we are supposed to do

Justice - fairness

Forgiveness - letting go of negative feelings, e.g. anger or blame.

Thurnham Church of England Infant School Admissions Explained

(including Thurnham Church of England Infant School – Roseacre Junior School Linked Admission Policy)

Thurnham Church of England Infant School is committed to promoting the principles and practices of equality and inclusion. A whole school approach is used to ensure all children receive equality of opportunity - not only so that every child is included and not disadvantaged, but also so that each child may learn from the earliest age to value diversity in others and grow up making a positive contribution to society. We acknowledge and respond to the differing needs of all children, whatever their cultural or ethnic background and experiences and whatever their physical and educational needs. We understand the importance of providing a challenging and enjoyable programme of learning and development and we undertake to make reasonable adjustments to enable all to participate and feel valued and supported.

Thurnham Church of England Infant School is fully committed to avoiding all forms of discrimination as set out in the Equality Act 2010 (including February 2013 update). This applies to all pupils, parents and staff members and includes inappropriate discrimination on grounds of gender, age, religion or belief, physical ability or disability, learning ability, other special education needs or academic or sporting ability, race (including colour, nationality, ethnicity, family, culture or linguistic background), marital status and civil partnership, sex, sexual orientation, gender reassignment, pregnancy and maternity.

Initial Applications

As a Kent County Council school, our admissions are run for us by Kent County Council. If you wish to apply to for a Reception place as your child is about to become the statutory school age then the full procedure is explained by following this link to Kent's school admissions site at:

<http://www.kent.gov.uk/education-and-children/schools/school-places/primary-school-places>

You will also find here information on part time attendance and deferred entry for Reception children.

If your child is aged 4-7 already and you are seeking an 'in-year' place for Reception, Year 1 or Year 2 then the link to the appropriate part of the Kent website is here: <http://www.kent.gov.uk/education-and-children/schools/school-places/move-to-a-different-school>

Linked Admissions with our Neighbouring Junior School

Following significant oversubscription for places at the school in 2012 (which resulted in families living relatively close to the school being unable to achieve a place for their child), Thurnham Church of England Infant School submitted to the Local Authority revised application criteria in order to link admissions with Roseacre Junior school. Our intention was to improve outcomes for parents and children within the local community. Kent County Council considered and agreed the proposals which are below and came into effect for the September 2014 intake. Please note, these should be read in conjunction with Roseacre Junior's School's criteria for entry which are available on their website:

<http://www.roseacre.kent.sch.uk/Key-Information/Admissions>.

Admissions Criteria for Thurnham Church of England Infant School

We have included a summary of the following information from KCC with some additional explanation at the end of this policy.

Before the application of oversubscription criteria, children with an Education, Health and Care Plan which names the school will be admitted. As a result of this, the published admissions number will be reduced accordingly.

The over-subscription criteria for Thurnham Church of England Infant School is as follows:

If the number of preferences for the school is more than the number of spaces available, then places will be allocated in the following priority order:

- **Children in Local Authority Care –**

A child under the age of 18 years for whom a local authority in England provides accommodation (Section 22 of the Children Act 1989) or who ceased to be so because they were adopted immediately from care or who are the subject of a care order under Part IV of the Act. This also includes children who were previously in care and are now adopted (including outside of England and internationally) and settled with a family.

- **Current Family Association –**

A brother or sister in Thurnham Church of England Infant school at the time of entry where the family continue to live at the same address as when the sibling was admitted – or – if they have moved – live within 2 miles of the school or have moved to a property that is nearer to the school than the previous property as defined by the 'Nearness' criterion' (below). Thurnham Church of England Infant School is linked to Roseacre Junior School for the purpose of admissions and the schools are considered to be the same school for this criterion. A sibling link will also continue to apply for a Reception year application for Thurnham Church of England Infant School where a sibling is transferring from Year 2 of Thurnham Church of England Infant School having applied for a place in Year 3 at Roseacre Junior School and there is an expectation that the child will be taking up the place in Year 3. In this context brother or sister means children who live as brother and sister in the same house, including natural brothers or sisters, adopted siblings, stepbrothers or sisters, foster brothers or sisters.

If siblings from multiple births (twins, triplets, etc) apply for a school and the school would reach its Published Admission Number (PAN) after admitting one or more, but before admitting all of those siblings, the LA will offer a place to each of the siblings, even if doing so takes

the school above its PAN. If the admissions are to the Reception year, and so result in a breach of class size legislation, the additional pupil(s) will be treated as “excepted” pupils, as defined in the School Admissions Code.

• **Health and Special Access Reasons –**

Medical, health, social and special access reasons will be applied in accordance with the school’s legal obligations, in particular those under the Equality Act 2010. Priority will be given to those children whose mental or physical impairment means they have a demonstrable and significant need to attend Thurnham Church of England Infant School. Equally this priority will apply to children whose parents’/guardians’ physical or mental health or social needs mean that they have a demonstrable and significant need to attend a particular school. Such claims will need to be supported by written evidence from a suitably qualified medical or other practitioner who can demonstrate a special connection between these needs and Thurnham Church of England Infant School.

• **Nearness of children's homes to school –**

The Local Authority (KCC) uses the distance between the child’s permanent home address and the school, measured in a straight-line using Ordnance Survey address point data. Distances are measured from a point defined as within the child’s home to a point defined as within the school as specified by Ordnance Survey. The same address point on the school site is used for everybody. When we apply the distance criterion for Thurnham Church of England Infant School, these straight-line measurements are used to determine how close each applicant’s address is to the school.

Additional Points To Note In Conjunction With The Criteria

- These criteria are in operation as you read this, any revisions (following a consultation process) in future will appear here.
- There will be **no** priority area at all for admission to Thurnham Church of England Infant School. After the sibling link and health criteria, distance from Thurnham Church of England Infant School (measured as above) will then be the main deciding factor for new entrants.
- If a pupil’s address changes after their admission, the link is broken if the new address is more than two miles (as the crow flies) from Thurnham Church of England Infant School and they are applying to Thurnham Church of England Infant School. The exception to this will be in the event a child gains admission and lives further than two miles, provided they are still in that address at the time of a subsequent application the link will be maintained.
- Roseacre Junior School will also prioritise all Year 2 pupils at Thurnham Church of England Infant provided Roseacre Junior School still receive formal applications for them, regardless of their home distance.
- Roseacre Junior School has chosen to have a priority area but this applies **only** after current Thurnham Church of England Infant School Year 2 and their own sibling link children have been allocated. Therefore, the Roseacre Junior School priority area will only affect children who are not a sibling or not already at Thurnham Church of England Infant School. Please refer to Roseacre Junior School if you need more information on this particular point.
- If a Thurnham Church of England Infant School child is moving to Roseacre Junior School for Year 3 and at the same time the parents are applying for a Reception place, they will be treated as a

sibling at Thurnham Church of England Infant School – this will only be invalidated for the Reception pupil if a parent does not apply to Roseacre Junior School for Year 3 or subsequently declines an offer from Roseacre Junior School.

- A sibling link will exist for children in all other years at either school, provided the older sibling is on either school roll in the same academic year the new pupil starts the school.

If you require any further clarification, please contact the relevant school who will be happy to explain how it will affect particular cases.